

# SUPPLEMENTAL PLAT TO M<sup>c</sup> PHERSON CEMETERY.

State of Kansas, McPherson County, ss.

I, H. A. Rowland, County Surveyor of McPherson County, Kansas do hereby certify the foregoing plat of that part of McPherson Cemetery is situated on the South West quarter of the South East quarter of the South West quarter of Section 27, Twp. 17, Range 37<sup>th</sup> and is bounded as follows: Beginning 1317 feet West of the South West corner of said section thence East 672 feet thence North 663 1/2 feet thence West 670 1/2 feet thence South 663 feet. Each block contains 20 lots except blocks 39, 40, 41 and 42 which contains 14 lots each. Each lot is 22 x 22 ft. All alleys are 4 ft. wide. Streets 35 ft. except those otherwise designated.

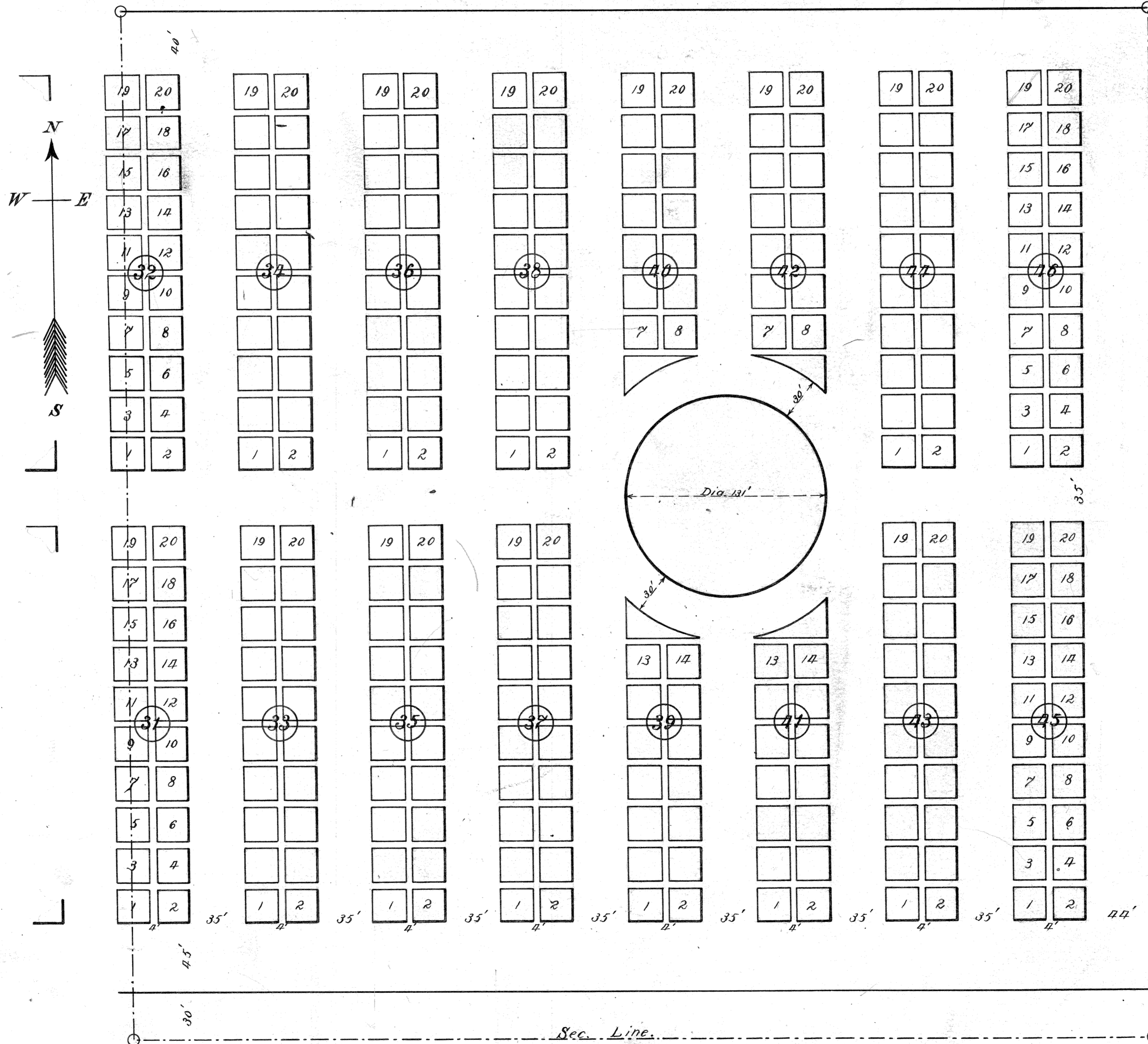
H. A. Rowland  
County Surveyor

The McPherson Cemetery Association, a Corporation duly organized under the laws of the State of Kansas having its office in the City of McPherson Kans. and the lawful owner of the above described land has dedicated said land for cemetery purposes and has caused the same to be surveyed and platted as shown above.

In witness whereof The McPherson Cemetery Association has caused its President and Secretary to subscribe their names and affix the official seal of said Association at the City of McPherson the 1st day of August 1906.

Seal

Philo S. Mead, President  
John R. Wright, Secretary



State of Kansas, }  
McPherson County, } ss.

Be It Remembered, that on this 1st day of August, A.D., 1906 before me, the undersigned, a Notary Public, in and for the County and State aforesaid, came Philo S. Mead President and John R. Wright Secretary of the McPherson Cemetery Association of McPherson, Kans. to me personally known to be the same persons who executed the within instrument of writing, and such persons duly acknowledged the execution of the same.

In Testimony Whereof, I have hereunto set my hand and affixed my official seal, the day and year last above written.

Geo. W. Allison

Seal

Notary Public

Term Expires January 23rd 1907.

State of Kansas, }  
McPherson County, } ss.

A true copy of original as filed August 1st 1906 at 11:50 o'clock. A.M.

Chas. W. Keebriel  
Register of Deeds.